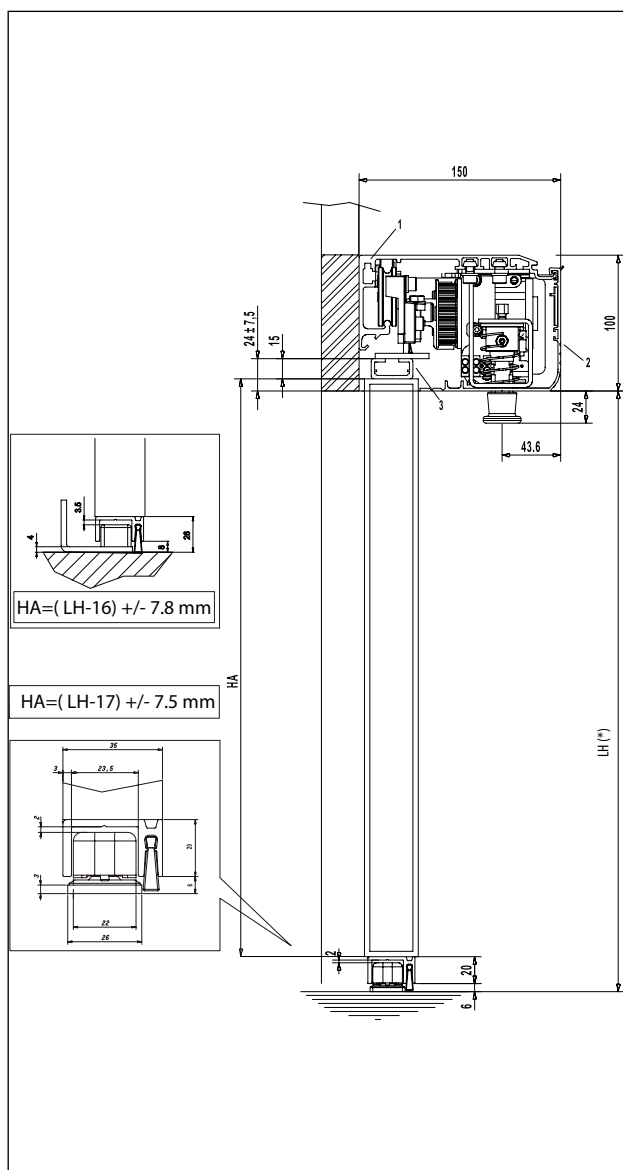


SCHEMI DI INSTALLAZIONE TIPO



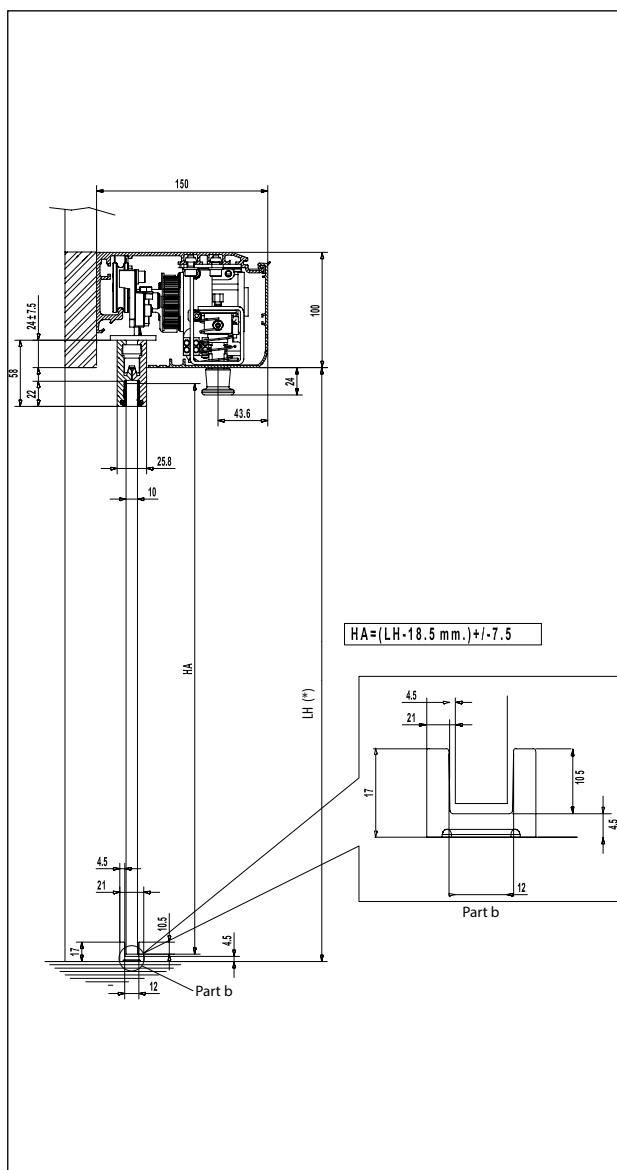
A100 COMPACT

DIMENSIONAMENTO IN ALTEZZA ANTA INTELAIATA



Nota: Quote in mm
 (*) consigliato max 2500 mm.

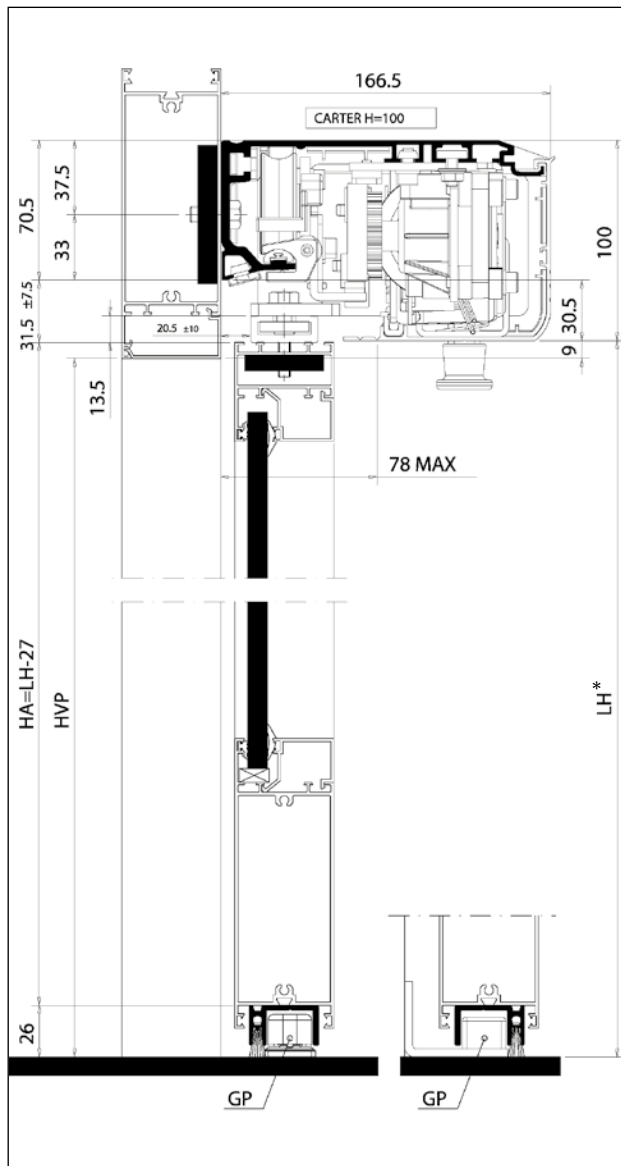
DIMENSIONAMENTO IN ALTEZZA PER ATTACCO ANTA IN CRISTALLO



Note: Quote in mm
 (*) consigliato max 2500 mm.

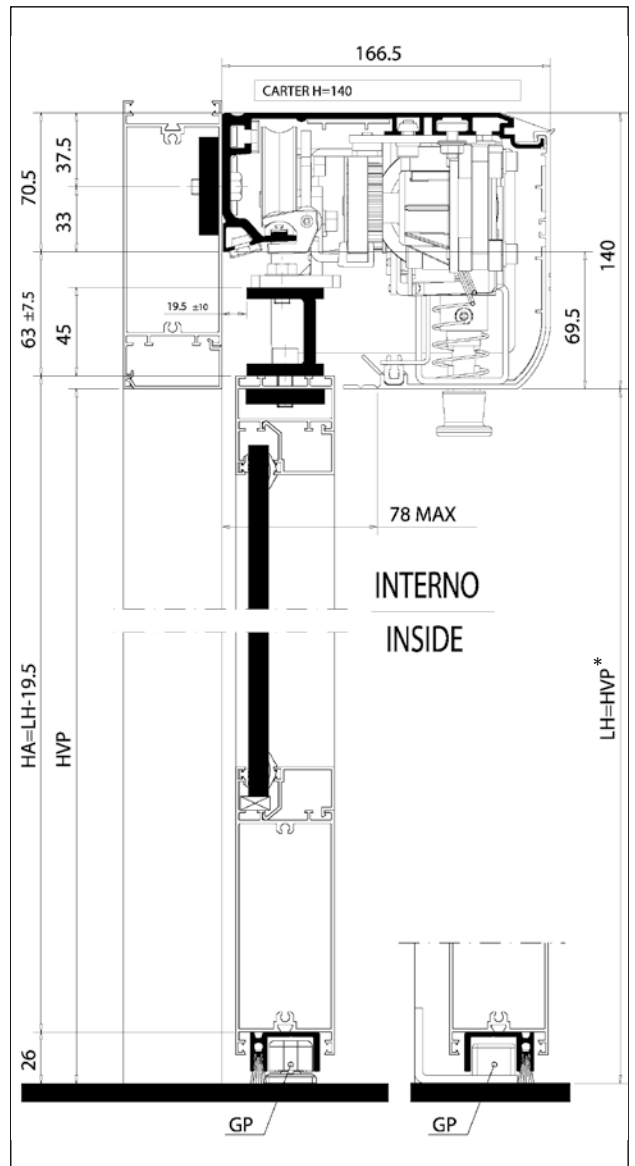
A1400 AIR

DIMENSIONAMENTO IN ALTEZZA PER ATTACCO ANTA
INTELAIATA. VERSIONE H100



Nota: Quote in mm
(*) consigliato max 2500 mm.

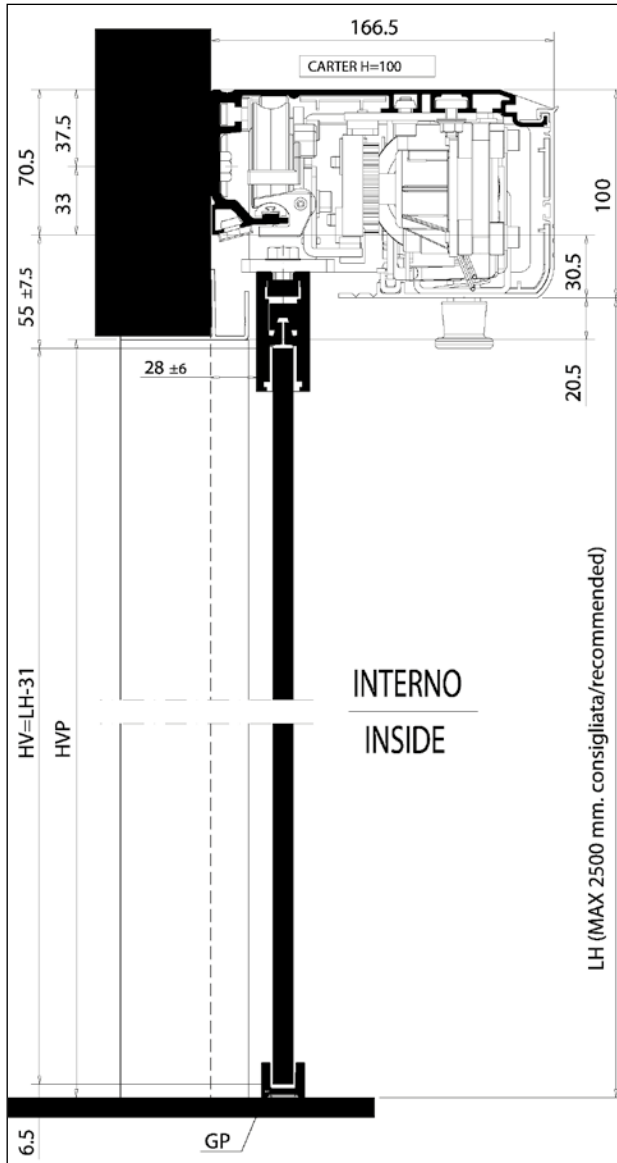
DIMENSIONAMENTO IN ALTEZZA PER ATTACCO ANTA
INTELAIATA. VERSIONE H140



Nota: Quote in mm
(*) consigliato max 2500 mm.

A1400 AIR

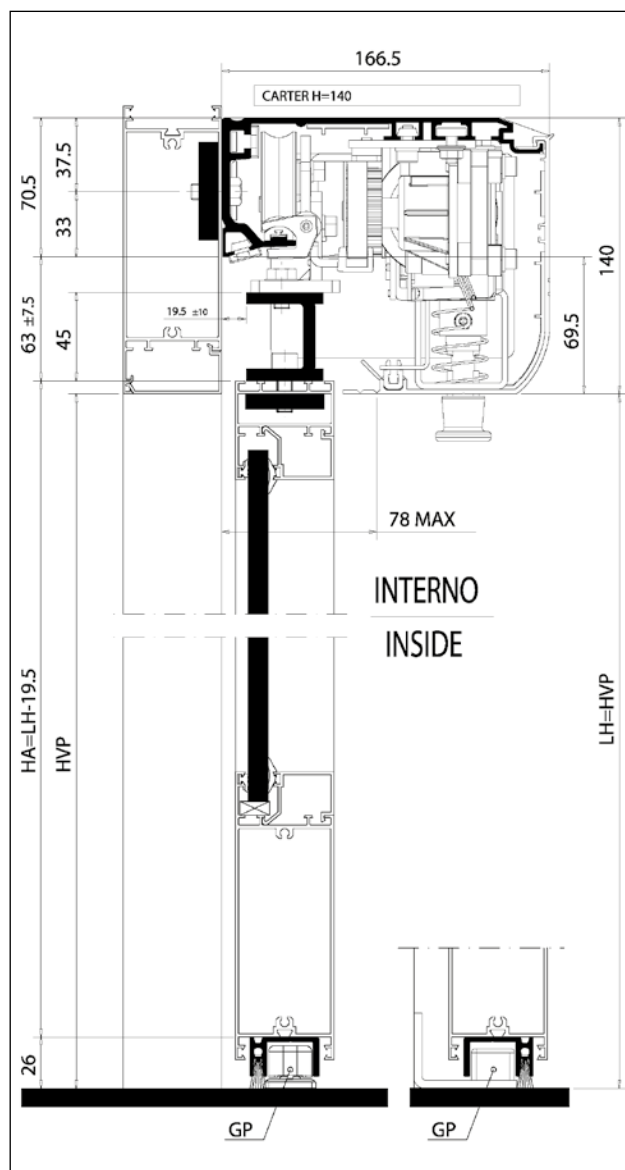
DIMENSIONAMENTO IN ALTEZZA PER ATTACCO ANTA IN CRISTALLO



Note: Quote in mm

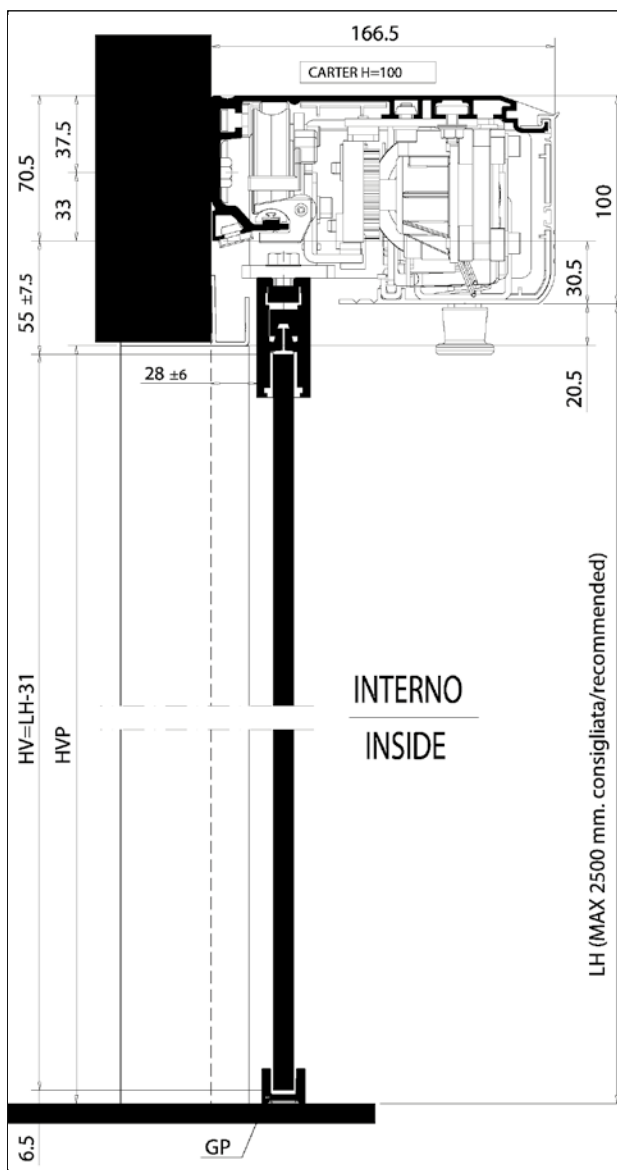
A1400 AIR RD

DIMENSIONAMENTO IN ALTEZZA ANTA INTELAIATA
VERSIONE H140



Nota: Quote in mm

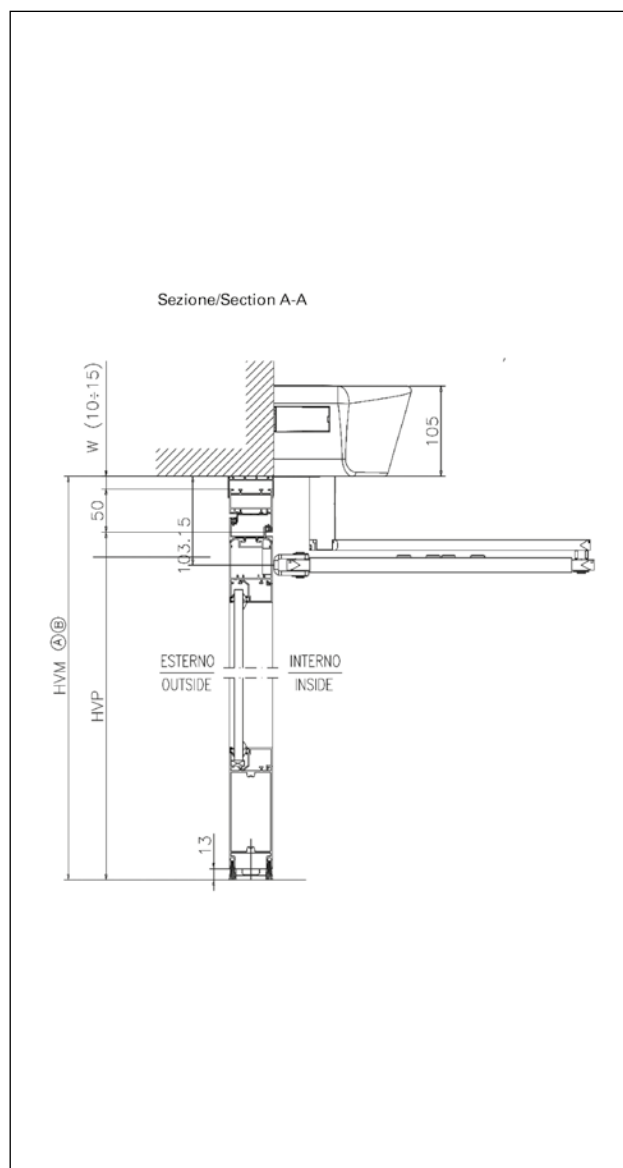
DIMENSIONAMENTO IN ALTEZZA PER ATTACCO ANTA IN
CRISTALLO



Nota: Quote in mm

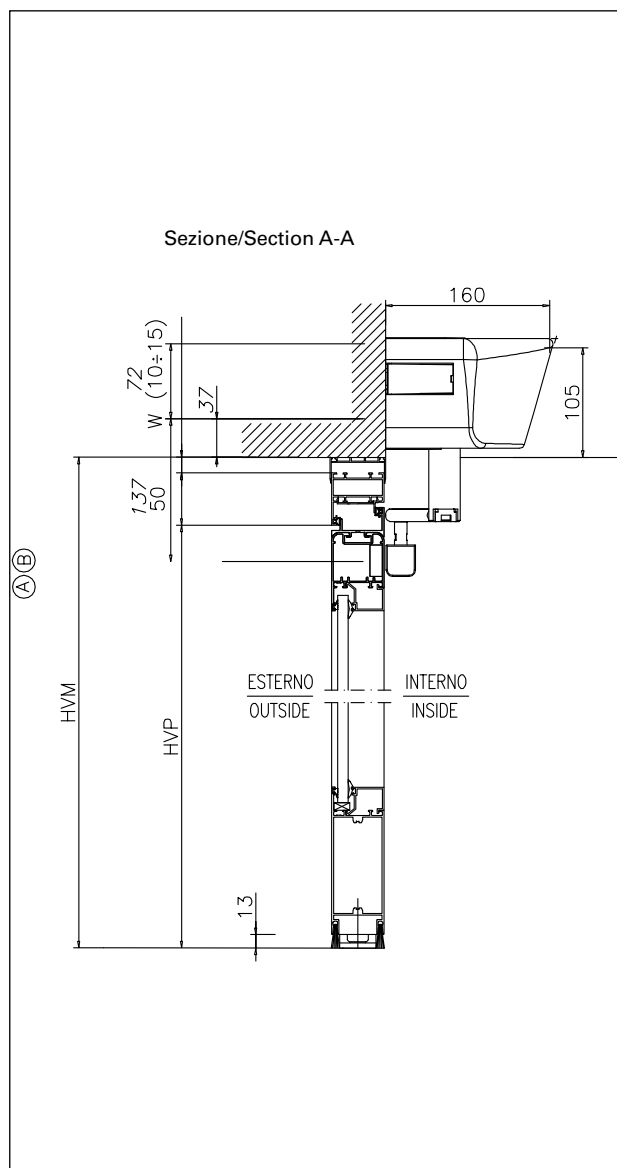
950N

ESEMPIO DI INSTALLAZIONE CON BRACCIO ARTICOLATO



Nota: Quote in mm

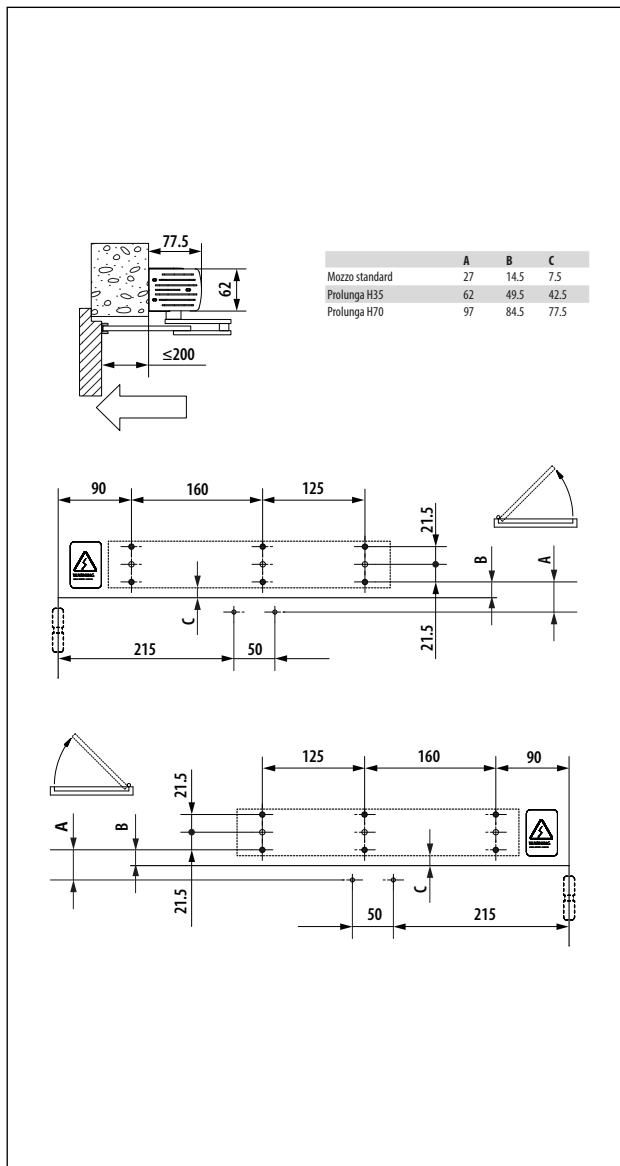
ESEMPIO DI INSTALLAZIONE CON BRACCIO A PATTINO



Nota: Quote in mm

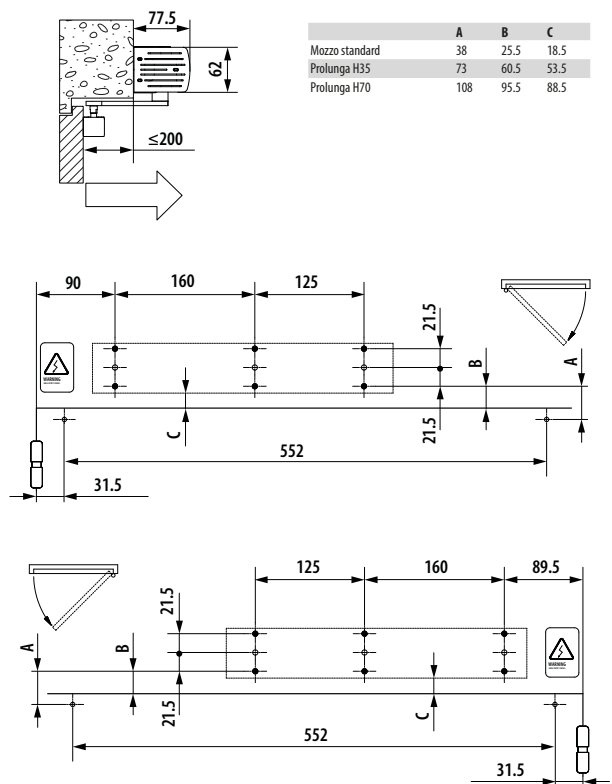
A951

ESEMPIO DI INSTALLAZIONE CON BRACCIO ARTICOLATO



Nota: Quote in mm

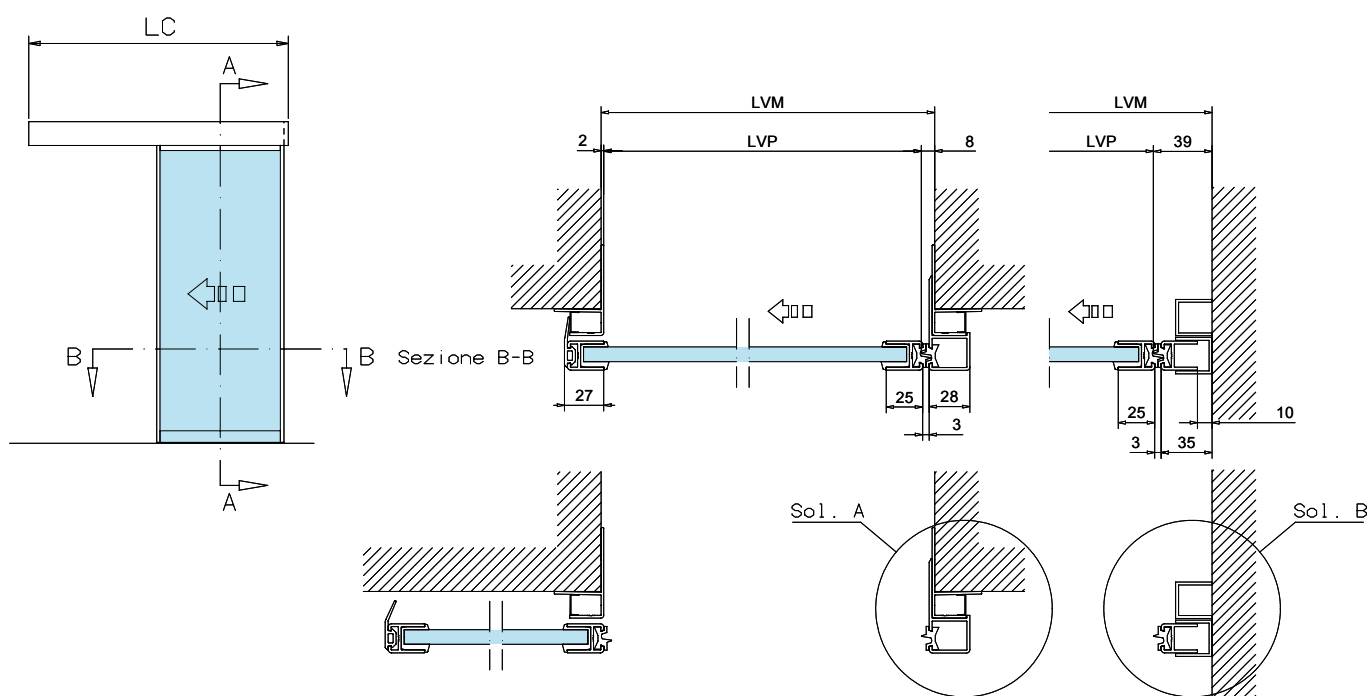
ESEMPIO DI INSTALLAZIONE CON BRACCIO A PATTINO



Nota: Quote in mm

TK20

1 ANTA SCORREVOLE



LVM = Larghezza vano muro min 700 / max 2000 (*) **LVM = LVP+11 (sol.A)** **LVM = LVP + 42 (sol.B)**

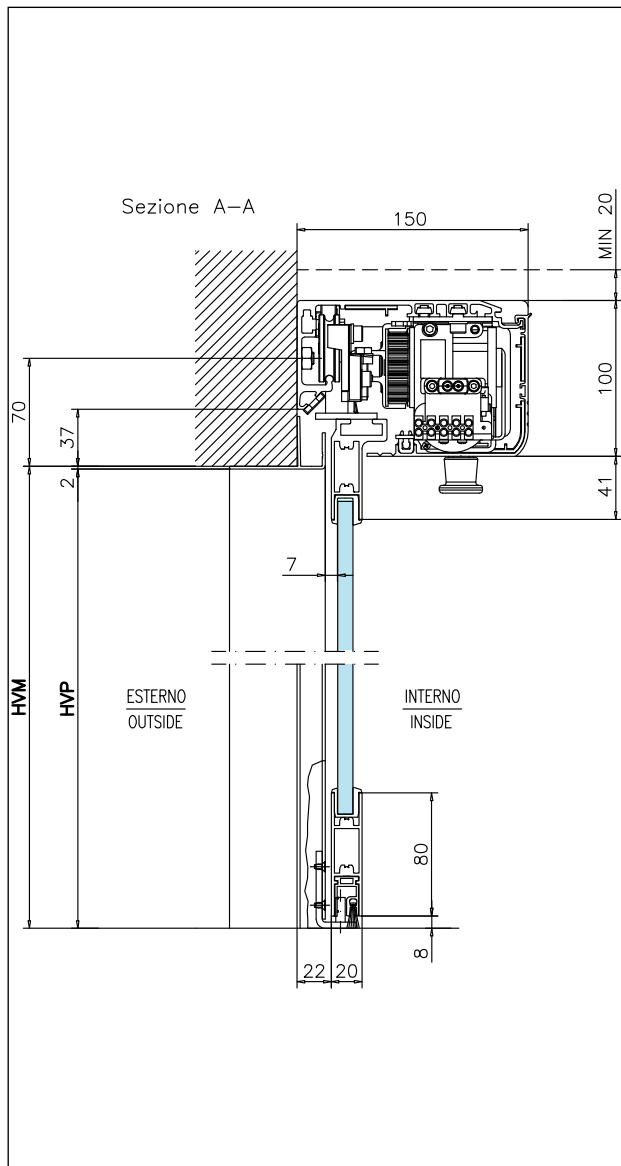
LVP = Larghezza vano passaggio **LVP = LVM-11 (sol.A)** **LVP = LVM-42 (sol.B)**

LC = Lunghezza carter

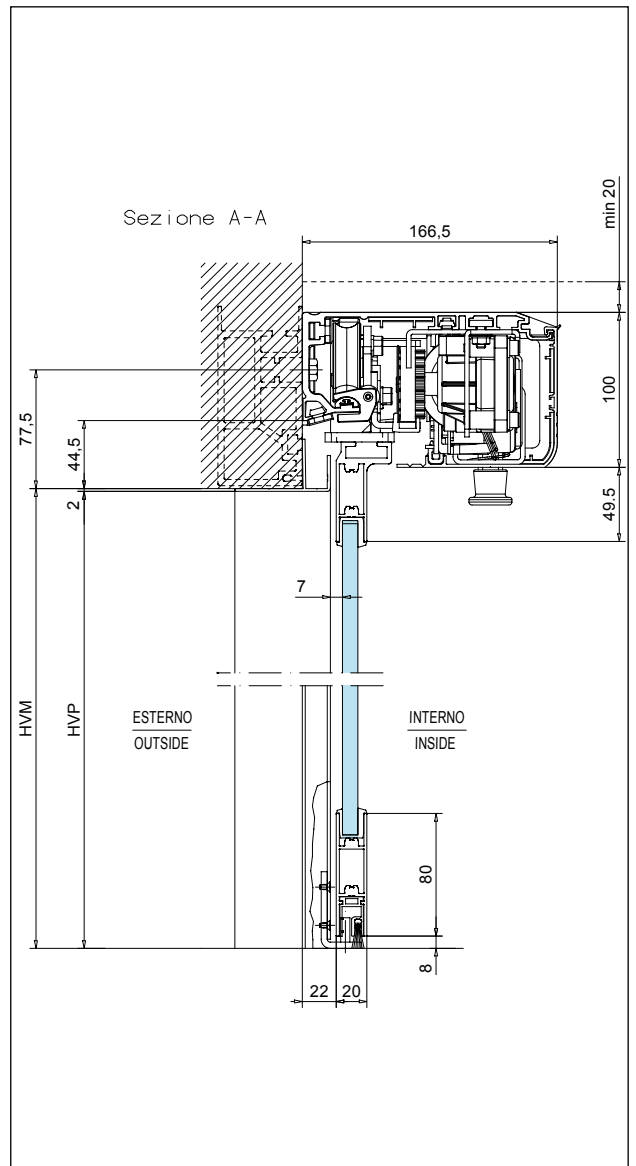
(*) per $LVM > 2000$ mm, contattare FAAC.

TK20

FAAC A100 COMPACT 1



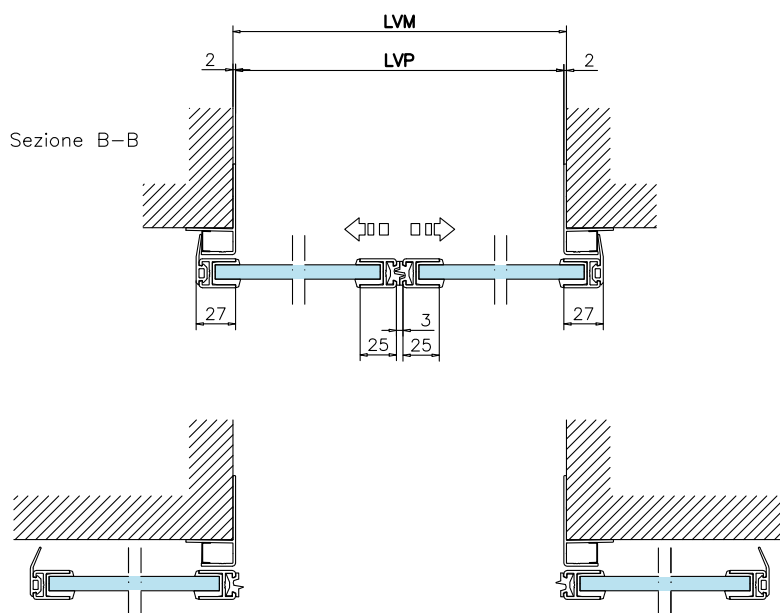
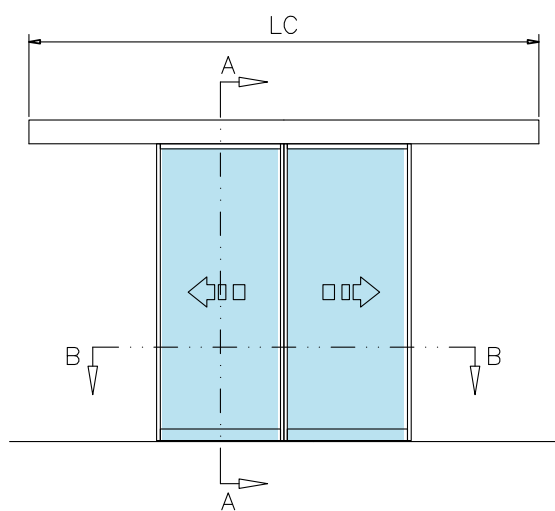
FAAC A140 AIR1



HVM = Altezza vano muro max 2500 mm (*)
HVP = Altezza vano passaggio **HVP** = **HVM**-2
 (*) per **HVM**>2500 mm, contattare FAAC.

TK20

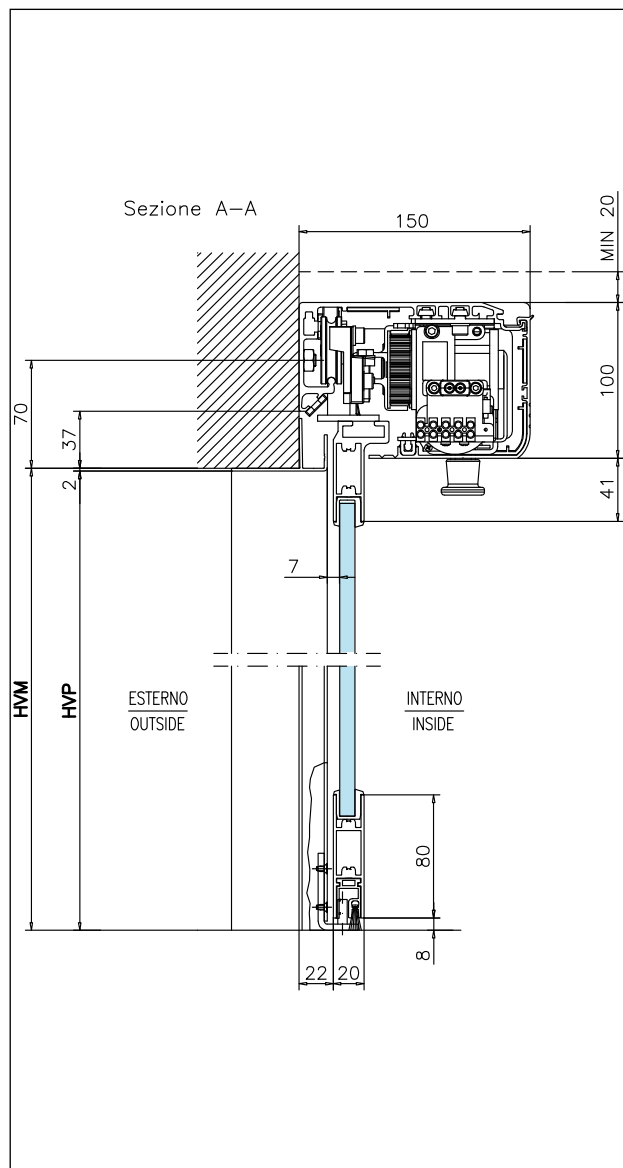
2 ANTE SCORREVOLI



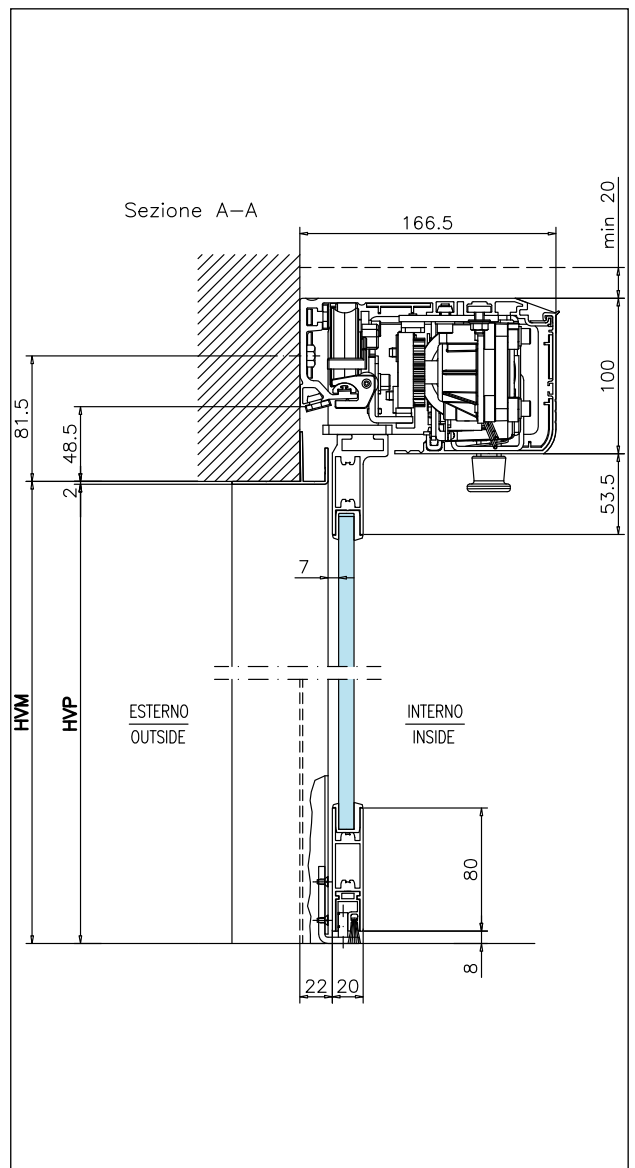
- LVM** = Larghezza vano muro min 800 / max 2000 (*) **LVM** = **LVP**+4
LVP = larghezza vano passaggio min 800 / max 3000 mm (**) **LVP** = **LVM**-4
LC = lunghezza carter
(*) per $LVM > 2500$ mm, contattare FAAC.
(**) consigliata.

TK20

FAAC A100 COMPACT2



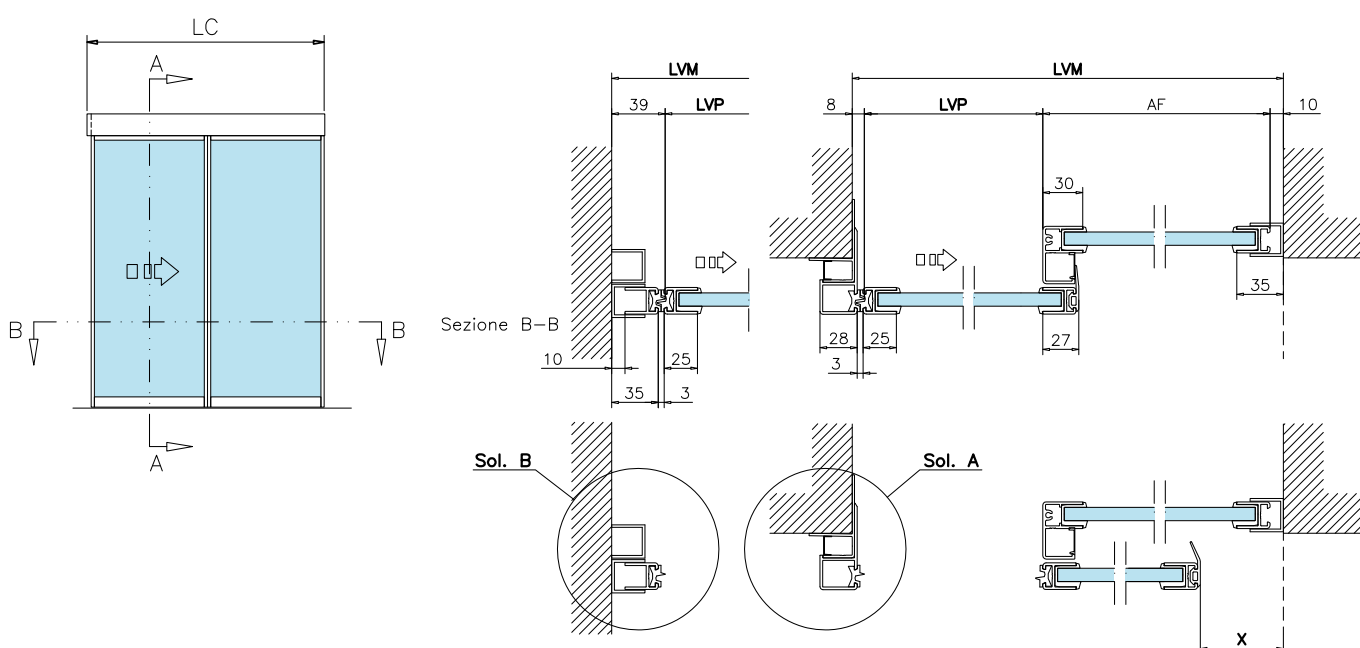
FAAC A140 AIR2



HVM altezza vano muro max 2500 mm (*)
HVP = altezza vano passaggio **HVP = HVM-2**
 (*) per $HVM > 2500$ mm, contattare FAAC.

TK20

1 ANTA SCORREVOLE CON FISSO LATERALE



LVM = Larghezza vano muro min 1500 / max 5100 (*) **LVM = 2LVP+45+X (sol.A)** **LVM = 2LVP+76+X (sol.A)**

LVP = larghezza vano passaggio **LVP = (LVM-45-X)/2 (sol.A)** **LVP = (LVM-76-X)/2 (sol.B)**

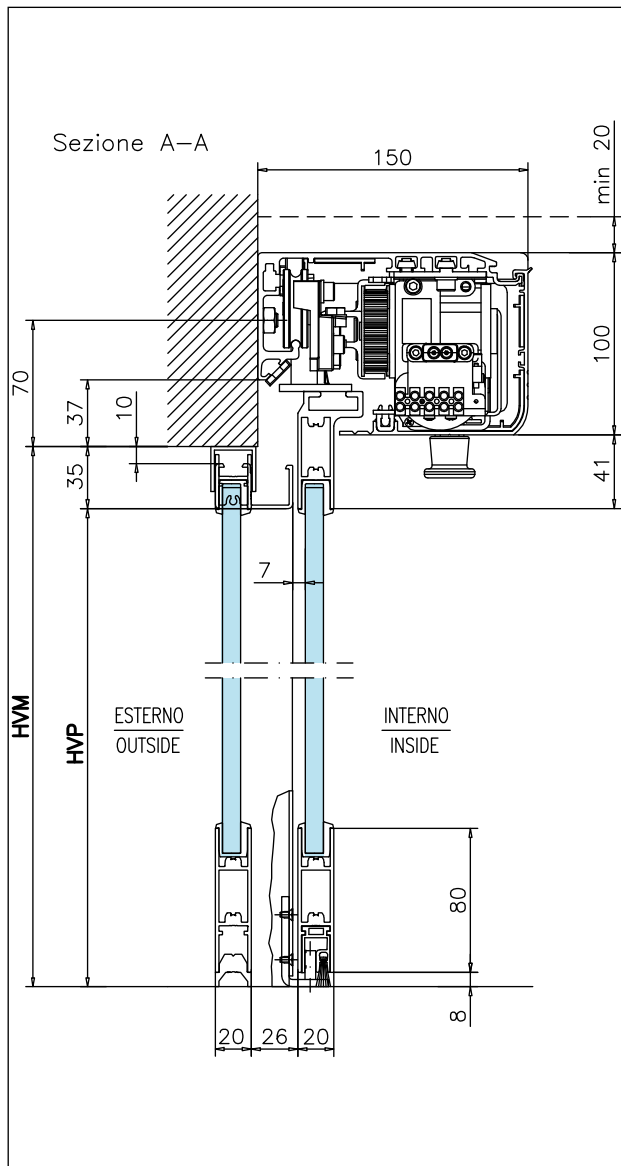
X = altezza vano passaggio Min 60 mm

LC = lunghezza carter

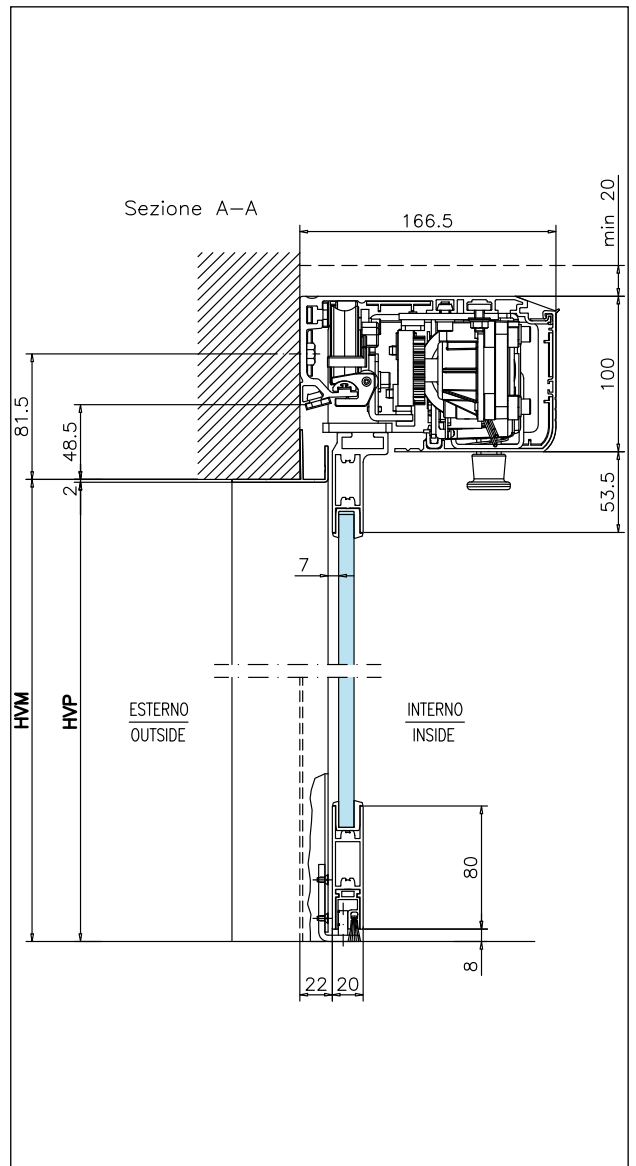
(*) per $LVM > 5100$ mm, contattare FAAC.

TK20

FAAC A100 COMPACT 1



FAAC A140 AIR1



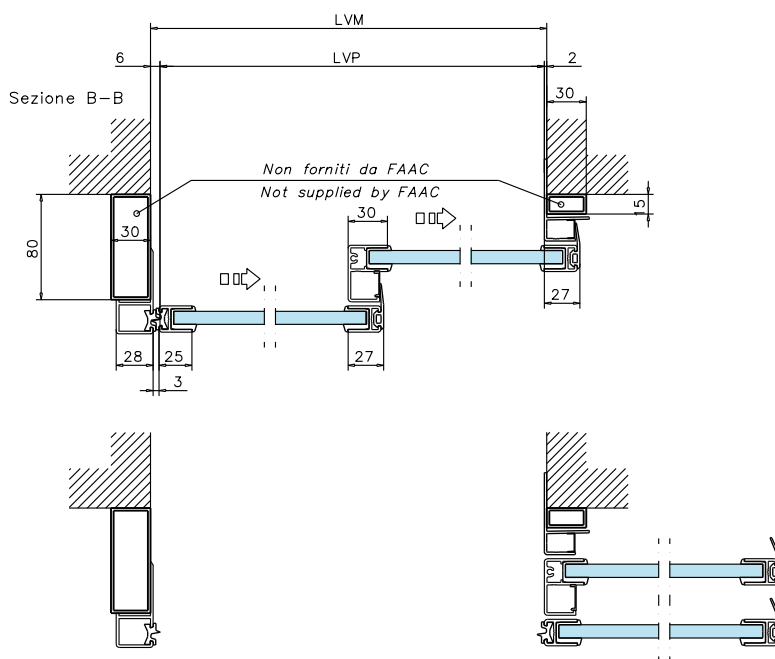
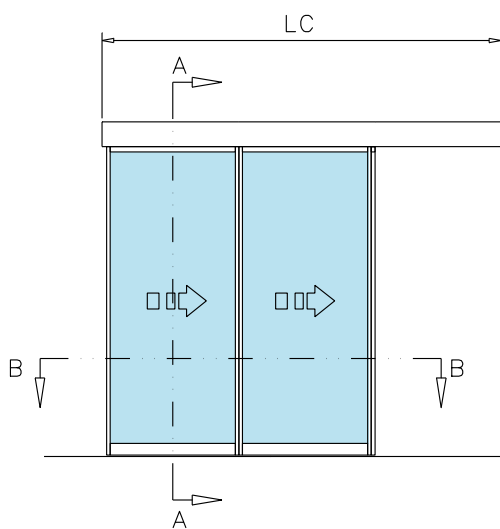
HVM = altezza vano muro max 2500 mm (*)

HVP = altezza vano passaggio **HVP = HVM-35**

(*) per $HVM > 2500$ mm, contattare FAAC.

TK20

2 ANTE SCORREVOLI TELESOPICHE



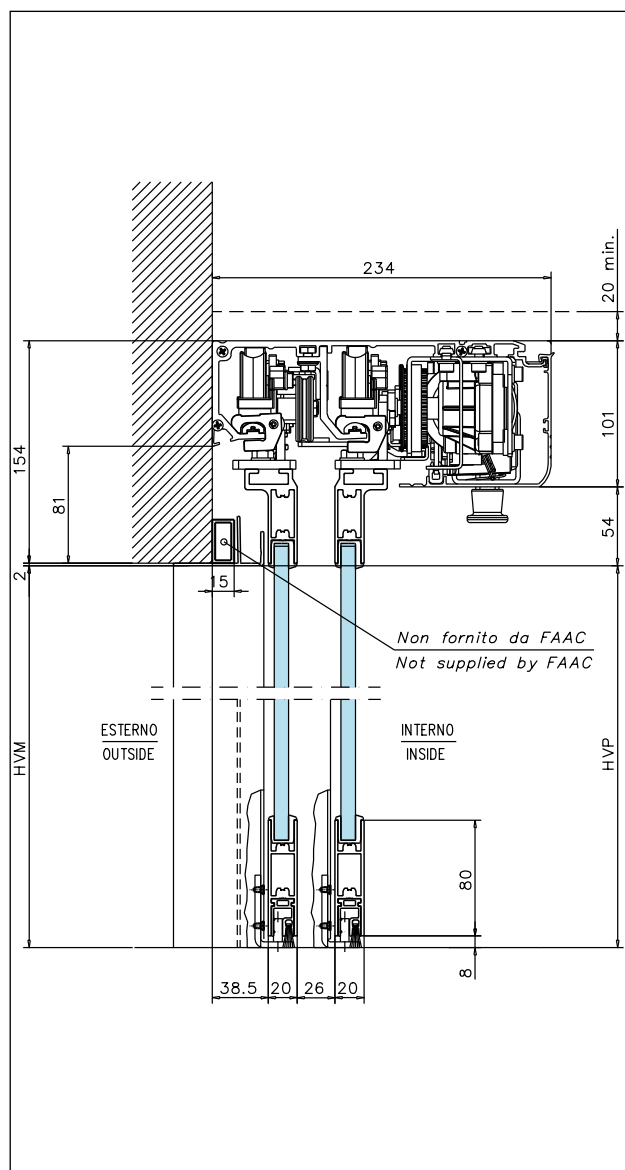
LVM = Larghezza vano muro min 1100 / max 3000 **LVM = LVP + 8**

LVP = Larghezza vano passaggio **LVP = LVM - 8**

LC = lunghezza carter

TK20

FAAC A140 AIR T2



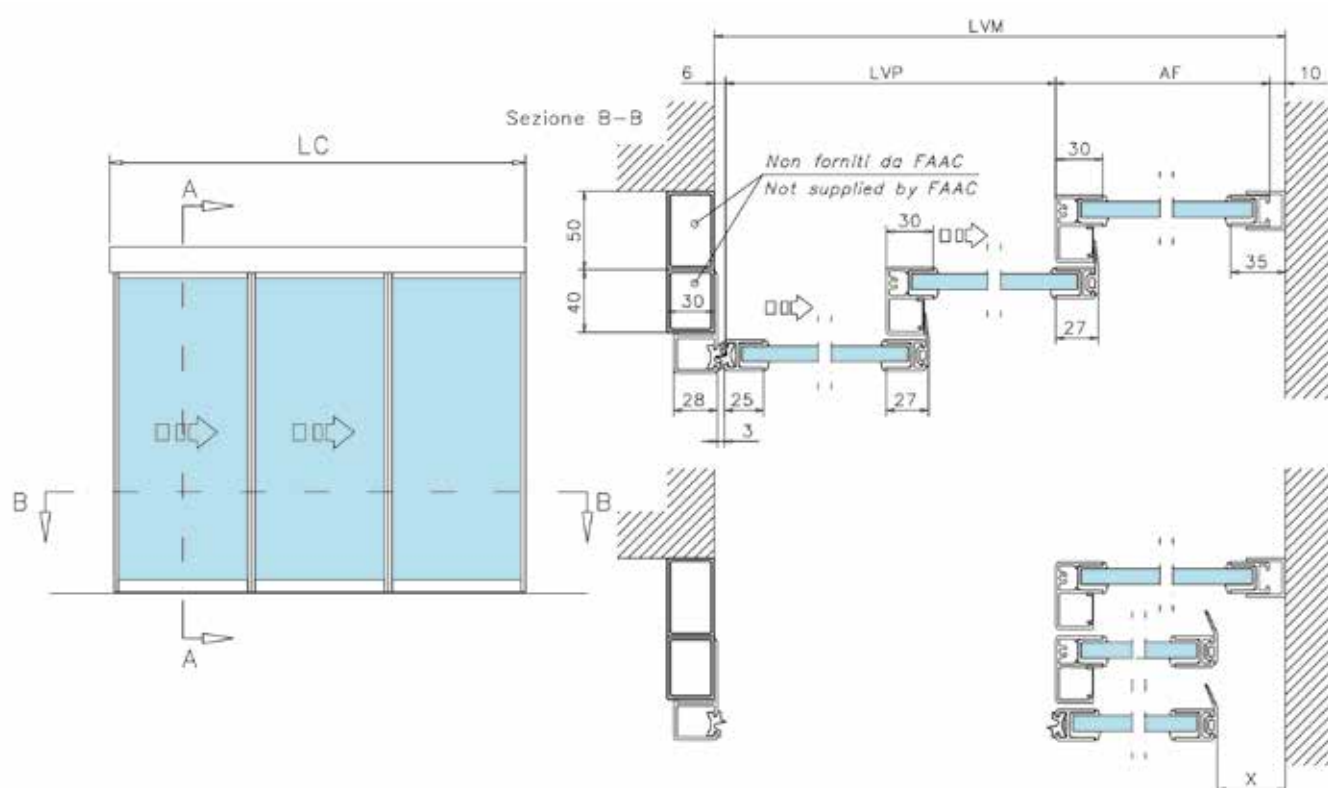
HVM = altezza vano muro max 2500 mm (*)

HVP = altezza vano passaggio **HVP = HVM - 2**

(*) per $HVM > 2500$ mm, contattare FAAC.

TK20

2 ANTE SCORREVOLI TELESCOPICHE CON FISSO LATERALE



LVM = Larghezza vano muro min 1750 / max 4600 (*) **LVM = 3LVP / 2 + 33,5 + X**

LVP = Larghezza vano passaggio min 1100 / max 3000 mm. (*) **LVP = 2 (LVM - 33,5 - X) / 3**

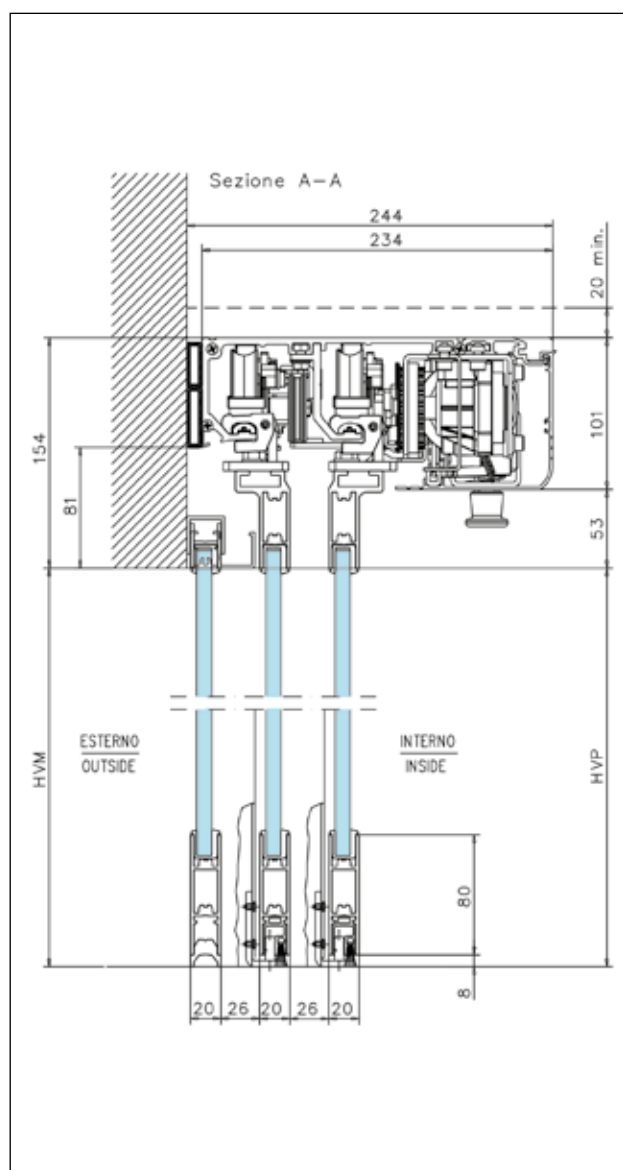
X = distanza di sicurezza min 60 mm

LC = lunghezza carter

(*) per $LVM > 4600$ mm contattare FAAC.

TK20

FAAC A140 AIR T2



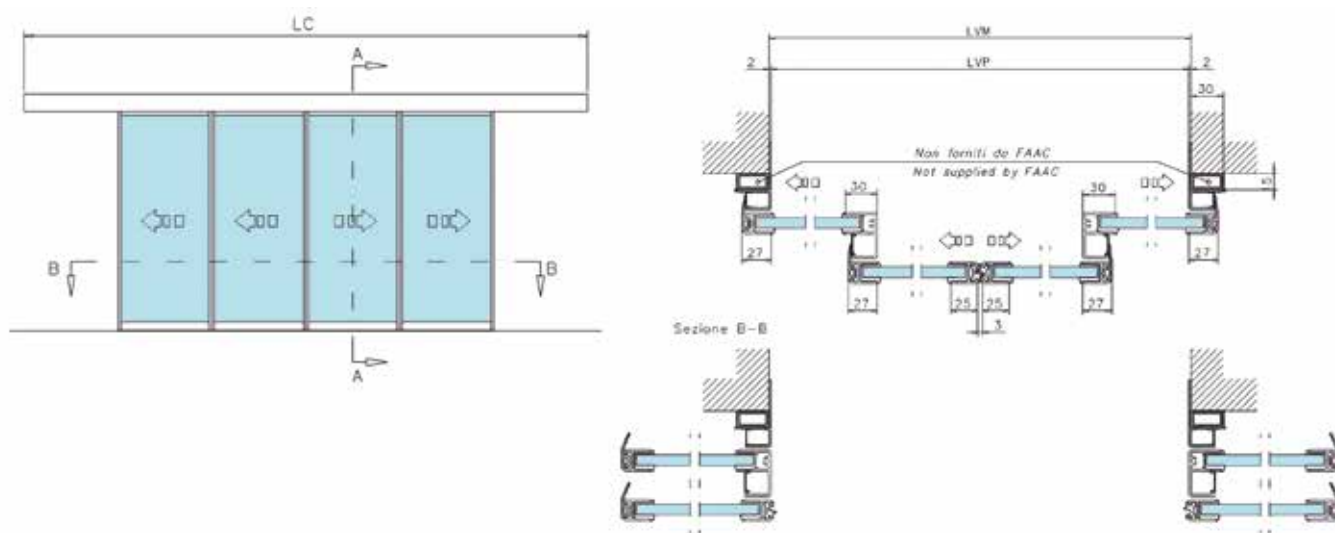
HVM = altezza vano muro max 2500 mm (*)

HVP = altezza vano passaggio **HVP = HVM**

(*) per $HVM > 2500$ mm contattare FAAC.

TK20

4 ANTE SCORREVOLI TELESCOPICHE



LVM = Larghezza vano muro min 1400 / max 3600 (*) **LVM = LVP + 4**

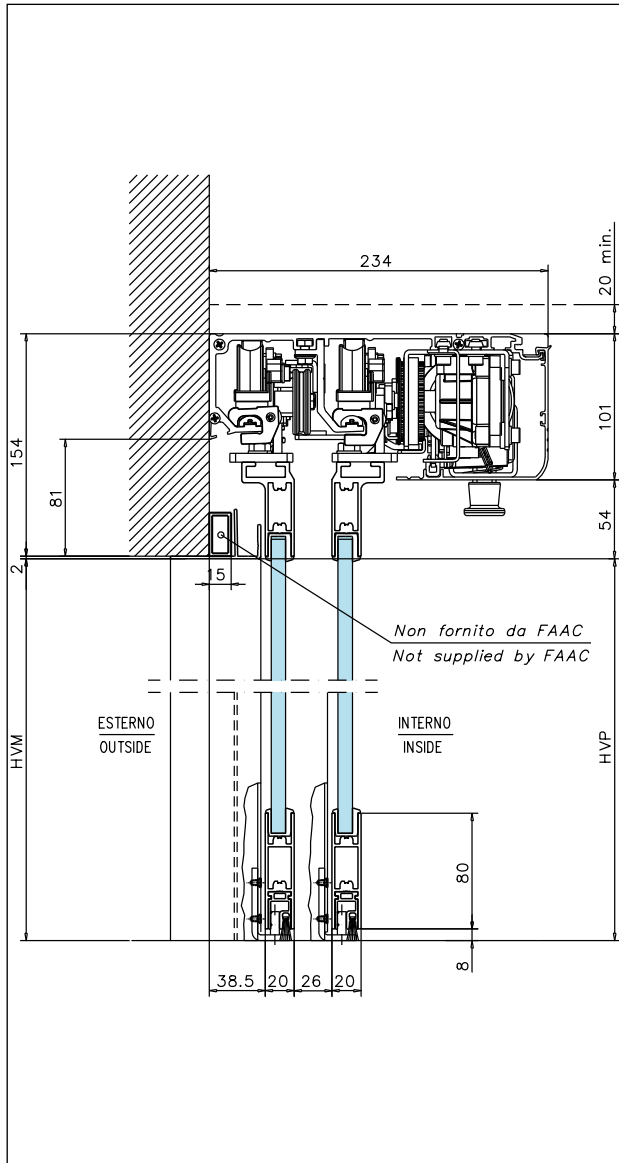
LVP = larghezza vano passaggio **LVP = LVM - 4**

LC = lunghezza carter

(*) per $LVM > 3600$ mm contattare FAAC.

TK20

FAAC A140 AIR T4



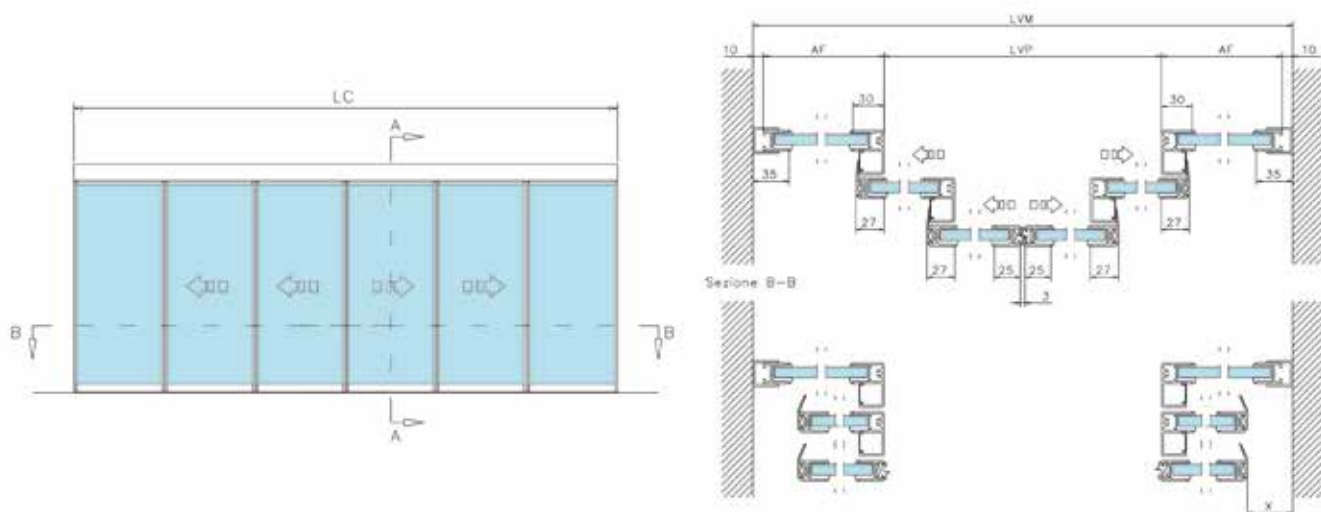
HVM = altezza vano muro max 2500 mm (*)

HVP = altezza vano passaggio **HVP = HVM - 2**

(*) per $HVM > 2500$ mm contattare FAAC.

TK20

4 ANTE SCORREVOLI TELESCOPICHE CON 2 FISSI LATERALI



LVM = Larghezza vano muro min 2200 / max 5600 (*) $LVM = 3LVP / 2 + 52,5 + 2X$

LVP = Larghezza vano passaggio min 1400 / max 3600 mm (*) $LVP = 2(LVM - 52,5 - 2X) / 3$

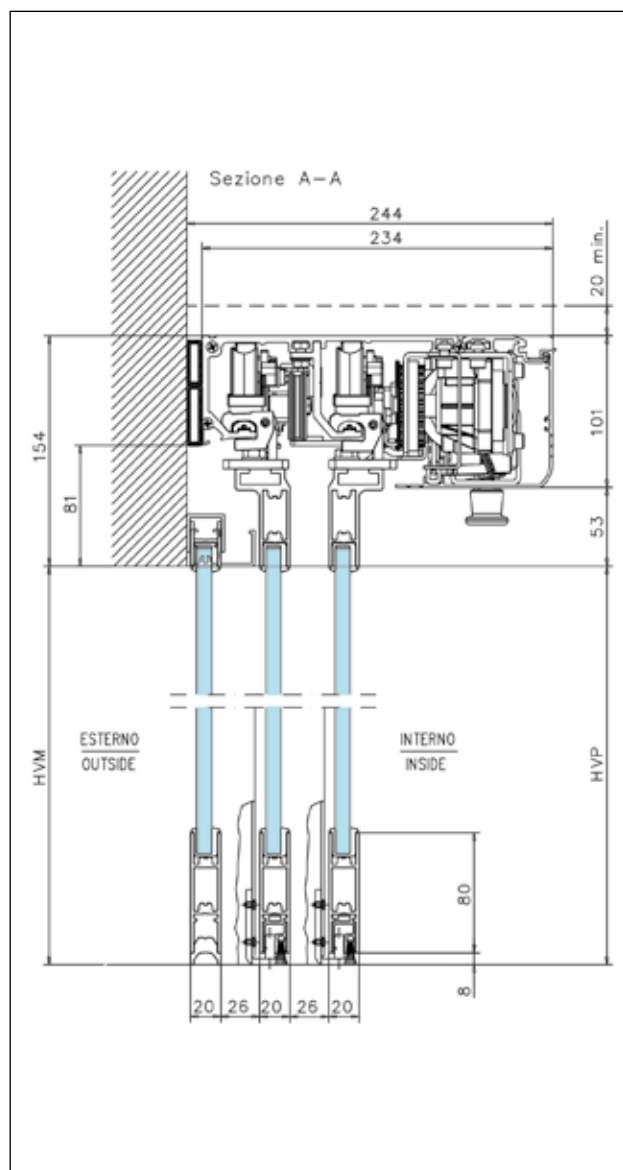
X = distanza di sicurezza min 60 mm

LC = lunghezza carter

(*) per $LVM > 5600$ mm contattare FAAC.

TK20

FAAC A140 AIR T4



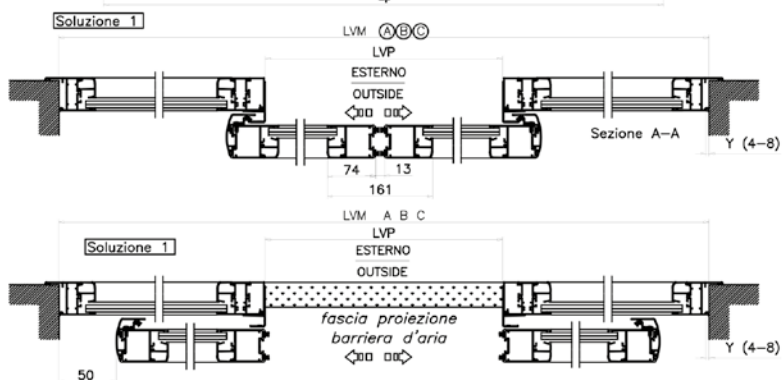
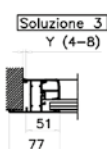
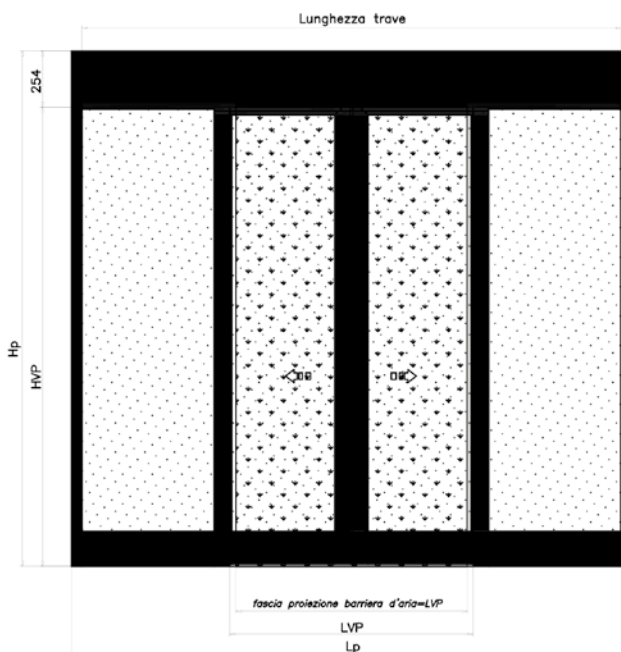
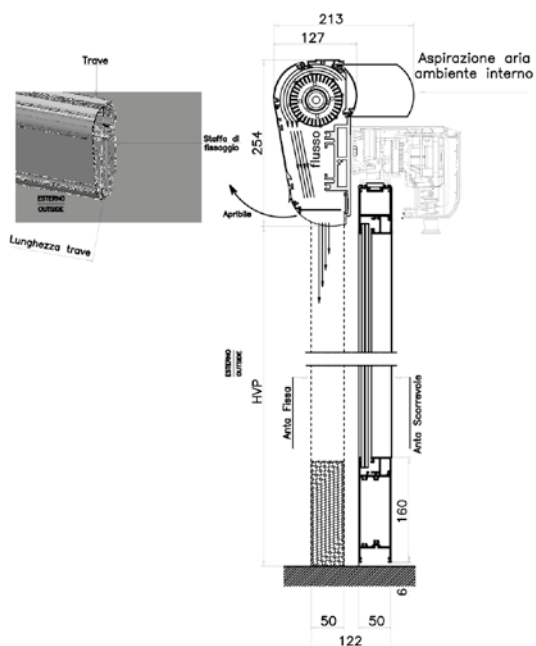
HVM = altezza vano muromax 2500 mm (*)

HVP = altezza vano passaggio **HVP = HVM**

(*) per $HVM > 2500$ mm contattare FAAC.

AIRSLIDE

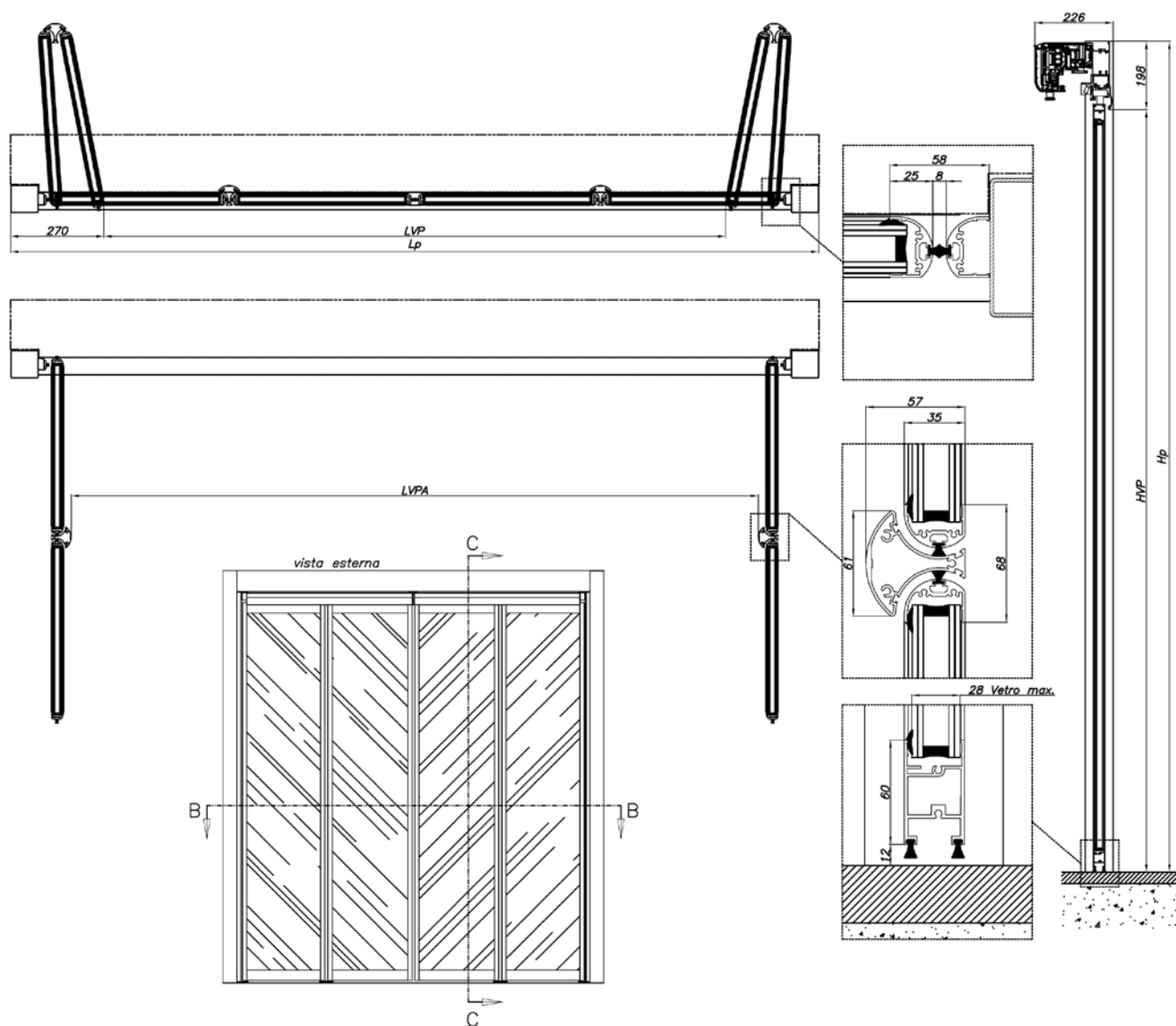
BARRIERA D'ARIA E A140 AIR



Nota: Quote in mm

SF1400

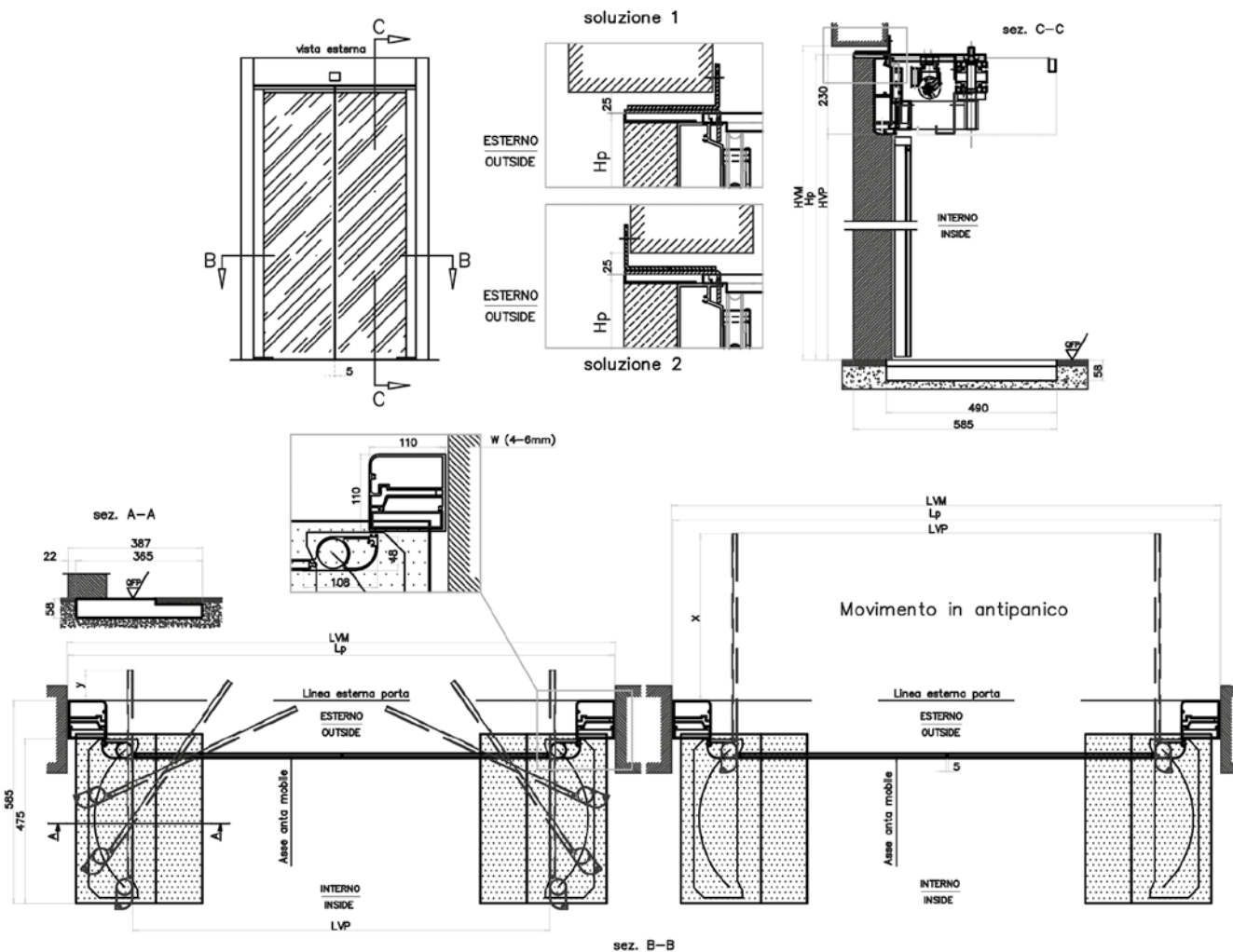
ESEMPI DI INSTALLAZIONE SF1400



Nota: Quote in mm

GBF1500-1600

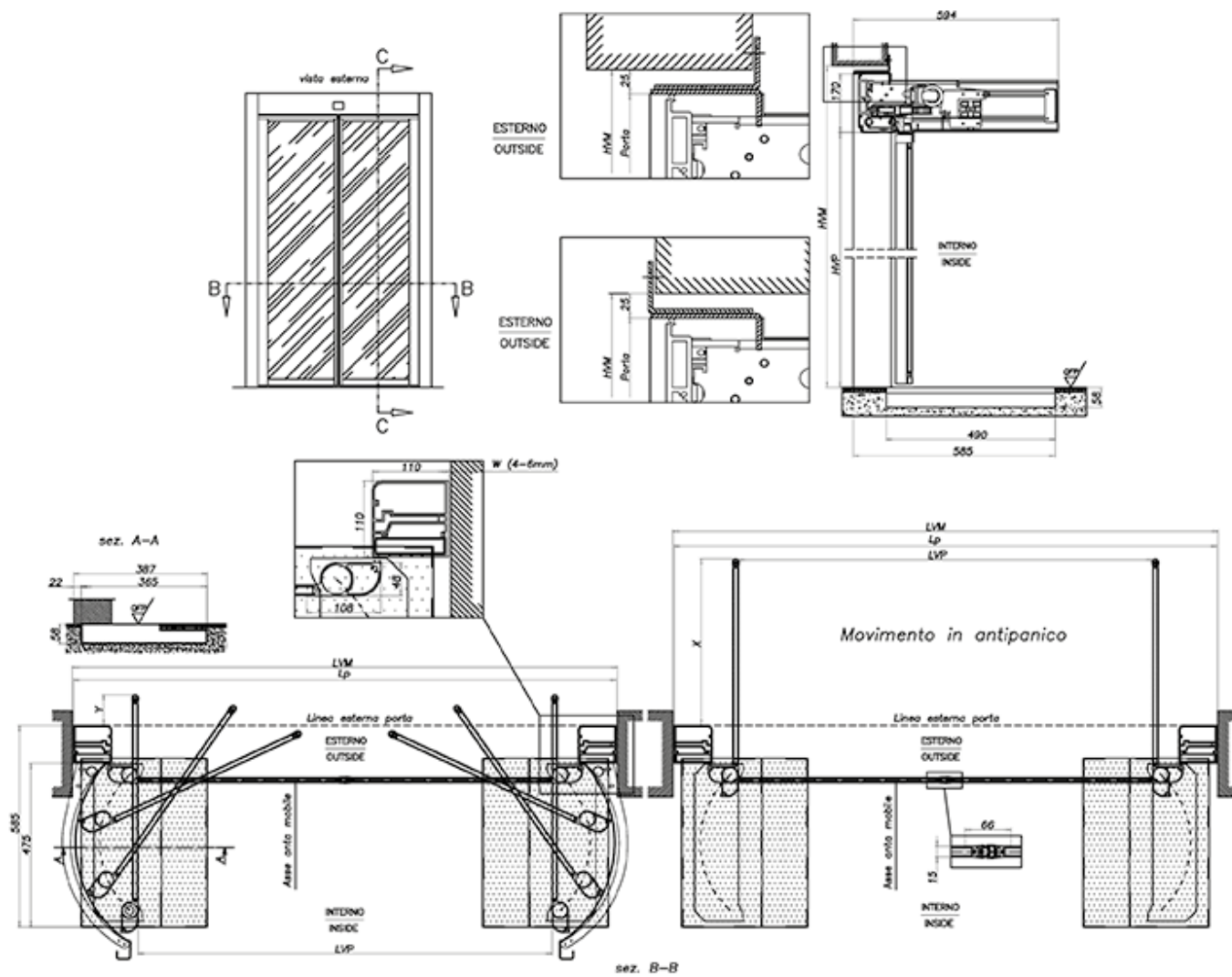
ESEMPI DI INSTALLAZIONE GBF1500 CRYSTAL



Nota: Quote in mm

GBF1500-1600

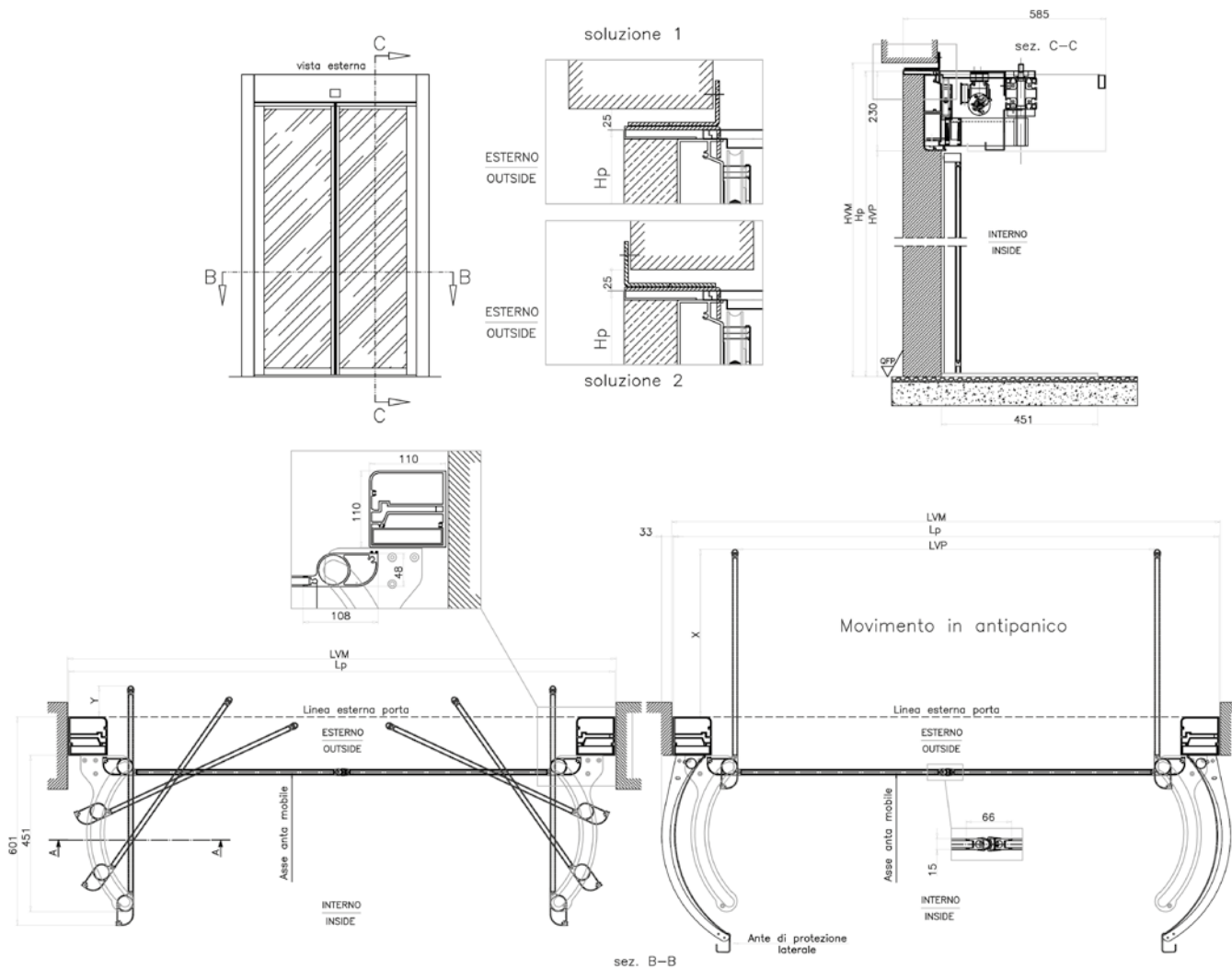
ESEMPI DI INSTALLAZIONE GBF1500



Nota: Quote in mm

GBF1500-1600

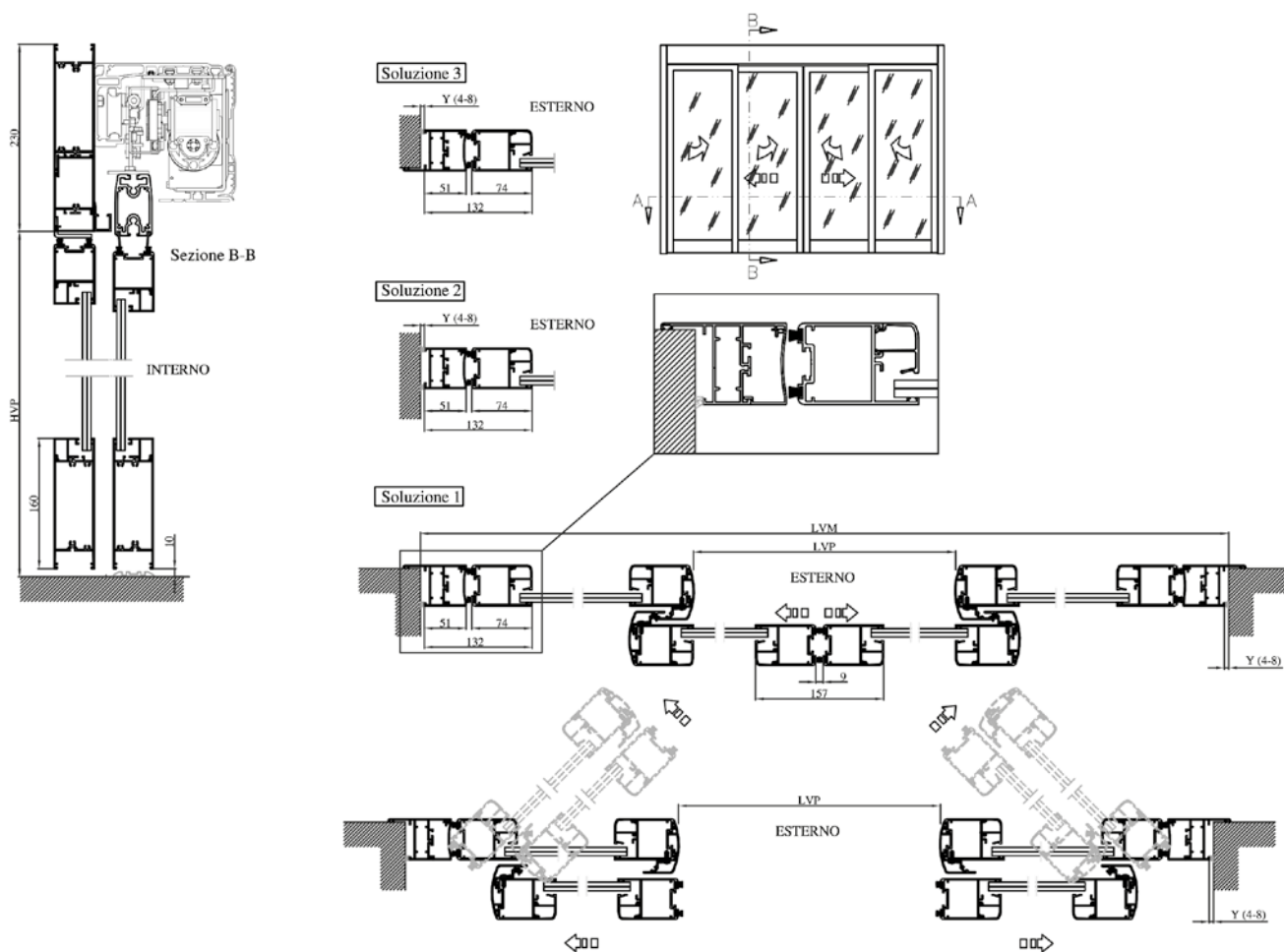
ESEMPI DI INSTALLAZIONE GBF1600



Nota: Quote in mm

GBF3500

ESEMPI DI INSTALLAZIONE GBF3500



Nota: Quote in mm